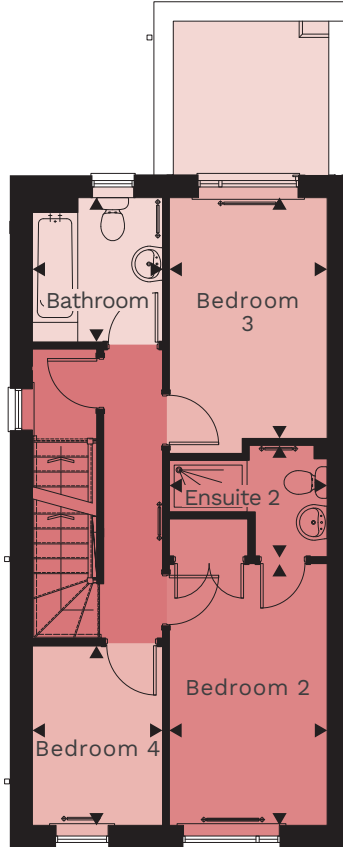


# Oak

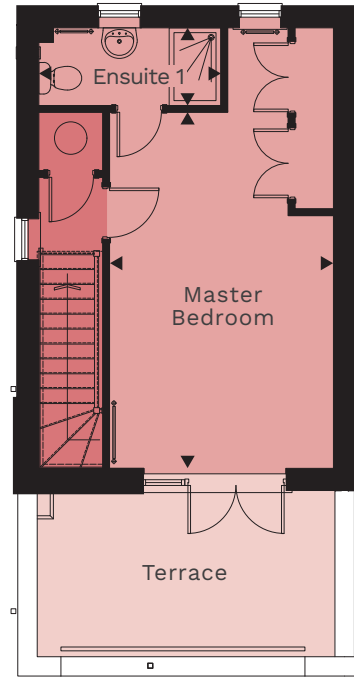
PLOTS 7, 28  
PLOTS 8, 27, 29 HANDED



Ground floor



First floor



Second floor

Kitchen/Dining Room	6.32m (max)	×	4.55m (max)	20'9" (max)	×	14'11" (max)
Living Room	5.97m (max)	×	4.55m (max)	19'7" (max)	×	14'11" (max)
Master Bedroom	6.81m (max)	×	3.36m (max)	22'4" (max)	×	11'4" (max)
Bedroom 2	4.04m	×	2.44m	13'3"	×	8'0"
Bedroom 3	3.95m (max)	×	2.44m (max)	13'0" (max)	×	8'0" (max)
Bedroom 4	2.77m	×	2.01m	9'1"	×	6'7"
Bathroom	2.18m	×	2.01m	7'2"	×	6'7"
Ensuite 1	2.81m	×	1.20m	9'3"	×	3'11"
Ensuite 2	2.44m (max)	×	1.72m (max)	8'0" (max)	×	5'8" (max)
WC	1.57m	×	1.45m	5'2"	×	4'9"
<b>Total</b>	<b>125.48 sq m</b>			<b>1350 sq ft</b>		