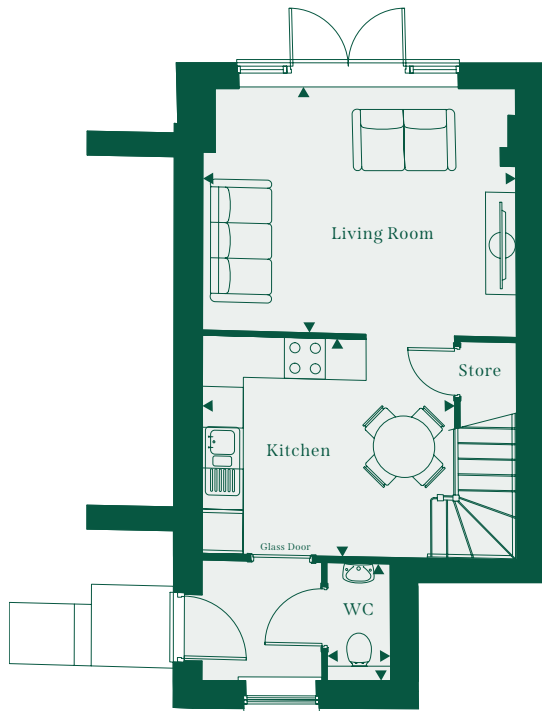
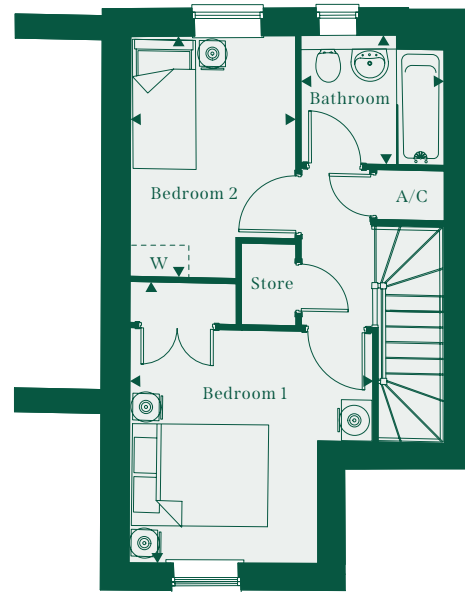


# Plot 2

## 2 bedroom house - conversion



GROUND FLOOR



FIRST FLOOR



<b>Living Room</b>	4.61m X 3.65m	15'2" X 12'0"
<b>Kitchen/Dining</b>	3.70m X 3.20m	12'2" X 10'6"
<b>Cloakroom</b>	0.93m X 1.73m	3'1" X 5'8"
<b>Bedroom 1</b>	3.57m X 3.41m	11'9" X 11'2"
<b>Bedroom 2</b>	2.42m X 3.52m	7'11" X 11'7"
<b>Bathroom</b>	2.10m X 1.90m	6'11" X 6'4"
<b>TOTAL</b>	<b>69.6 sq m</b>	<b>749 sq ft</b>

A/C = Airing cupboard

W = Position suggestions for freestanding wardrobes

Please note that this is a conversion



**FORESTERS**