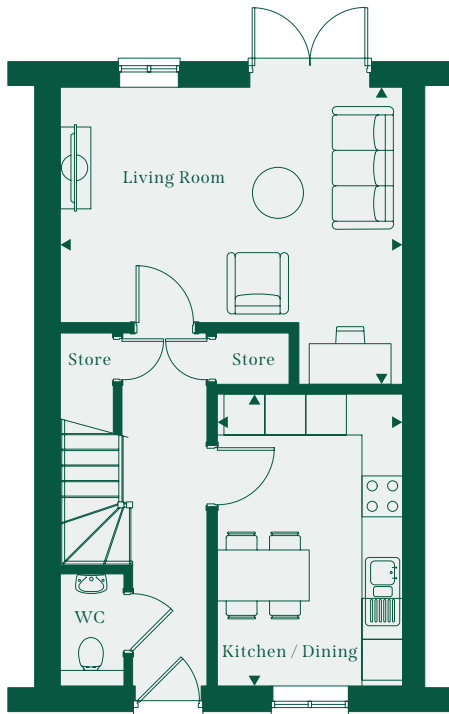
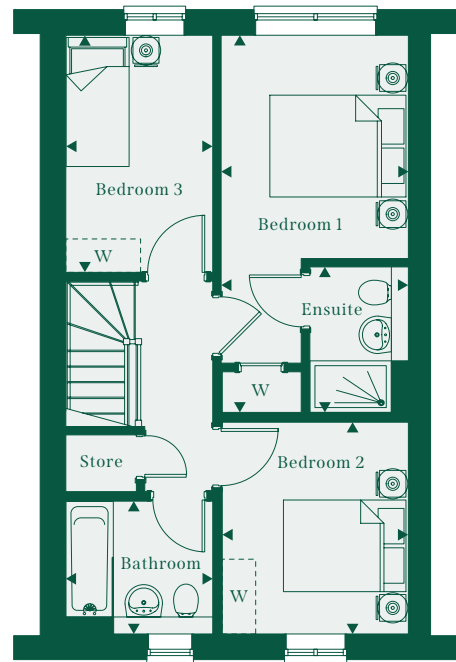


Plot 7

Three bedroom house



GROUND FLOOR



FIRST FLOOR



CGI indicative only

Living Room	5.03m X 4.37m	16'6" X 14'4"
Kitchen/Dining Room	2.73m X 4.29m	8'11" X 14'1"
Bedroom 1	2.75m X 4.82m	9'0" X 15'10"
En-Suite	1.45m X 2.14m	4'9" X 7'0"
Bedroom 2	2.73m X 3.11m	9'0" X 10'3"
Bedroom 3	2.15m X 3.48m	7'1" X 11'5"
Bathroom	2.15m X 1.95m	7'1" X 6'5"
TOTAL	89.88 sq m	967 sq ft

W = Built-in wardrobe for Bedroom 1

W = Position suggestions for freestanding wardrobes



FORESTERS